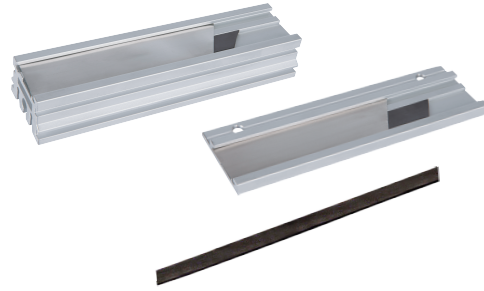


# MT2, MT5 MP1, MP2

## Magnetic Tape and Aluminium Profile



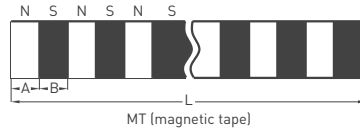
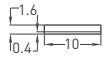
- 2 or 5 mm pole pitches
- $\pm 40 \mu\text{m}$  accuracy
- Self adhesive magnetic tape
- IP 67 protection level



### Magnetic Tape Technical Specifications

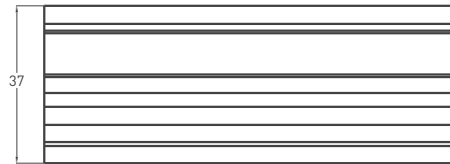
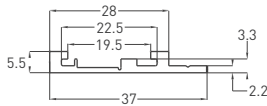
Pole pitch	2 mm, 5 mm
Accuracy	$\pm 40 \mu\text{m}$
Dimensions	10 mm x 1,5 mm
Max. stroke	Up to 50 m single piece
Cover strip	Stainless steel
Mechanical fixing	Self adhesive
Protection level	IP 67
Operating temperature	-20°C ... +80°C
Storage temperature	-30°C ... +90°C

### Mechanical Specifications



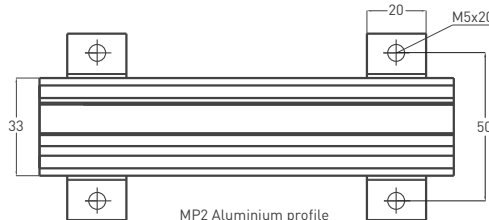
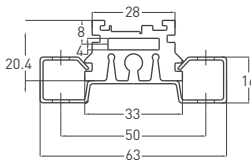
MT (magnetic tape)

Pole pitches	A(mm)	B(mm)	L
MT 2	2	2	Up to 50m single piece.
MT 5	5	5	



MP1 Aluminium profile

Model	Length
MTP	2M
MTP (protection steel)	2M : 2 meter (up to 50 meters)



MP2 Aluminium profile

Model	Length
MPP	2M
MPP (protection steel)	2M : 2 meter (up to 50 meters)

### Ordering Procedure

Model	Pole pitch	Accuracy	Length
MT	5	A40	5M
MT	2 : 2 mm 5 : 5 mm	A10 : $\pm 10$ A20 : $\pm 20$ A40 : $\pm 40$	5M : 5 meter (up to 50 meters)

Model	Length
MP1	2M
MP1 MP2	2M : 2 meter (up to 3 meters)